



ALKOTA *Accessories*

FOR THE PERFECT FIT



EVERYTHING YOU NEED FOR A

The elements can be unforgiving. If you let dirt and grime get the best of you, they can knock you off your game in a real hurry. Fight back. Because when your gear is clean, it not only looks good, it performs better. And so do you.

You may know we make the finest pressure washers and cleaning systems on the planet. Here are a few other ways we can streamline the cleaning process.

Get to know our complete line of accessories. You'll love what they can do.

DETERGENTS

Grease and grime. Road film and soil buildup. Scale and carbon deposits. You can't just will this stuff off your gear. Our detergents penetrate and dissolve hard-to-remove substances to kick-start the cleaning process. Ask us which are right for you.

- TR404:** Heavy-duty detergent removes dirt, oil, grease and grime.
- TR405:** Natural citrus degreaser dissolves grease, grime, road film and most industrial solids.
- TR406:** Aggressively cleans grease, road film, dirt and oil with penetrating foam and paint protectors to leave a clean, shiny surface.
- TR407:** Effective wetting agent and solvent package powers through heavy cleaning and degreasing problems.
- TR422:** Easy-rinse formula – the same kind used in many car washes – to quickly penetrate grease, oil and dirt.
- TS601:** Industrial strength and one of the most powerful detergents you'll find, it removes tough smoke, carbon, grease, oil and road film. Makes oxidized aluminum look like new.
- TS610:** Acidic detergent removes set concrete, water scale and rust.
- TS616:** Provides a water-resistant coating to bring out shine and luster in dull paint while leaving a thin film of protective wax.
- DE703:** Degreaser for difficult cleaning projects.
- DE704:** Citrus degreaser to dissolve grease, grime, tar and tough dirt.

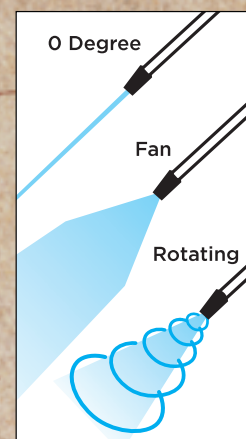
Need to remove something you don't see in this list? We have specialty detergents and can even blend something for your specific kind of grime.

Also, many of our detergents contain Scale Stop, which prevents scale buildup in components that come in contact with water, including heating coils. This reduces maintenance costs and prolongs the life of your pressure washer. It also improves the performance of your detergent by chemically softening your water.

NOZZLES

When it comes to nozzles, it's all about pressure. A larger nozzle creates less pressure for sensitive cleaning jobs and a smaller one means power.

Got a very specific area to clean? Try a zero-degree nozzle to create maximum impact in a small area. Or a fan nozzle to quickly clean a larger area. Or how about a rotating nozzle for the best of both worlds – a small impact area with faster cleaning action.



Nozzle Packs

4-Pack

- 5000 PSI @300° F.
- 1/4" quick connect plug..
- 303 stainless steel nozzle body.
- Hardened stainless steel orifice insert.
- Pack includes 1 ea. Of 0, 15, 25, 40 degree spray angles.



5-Pack

- Everything included in the 4-Pack except it includes 1 each of 0, 15, 25, 40 and 65 degree spray angles



Rotating Nozzles

- 3650 PSI max. pressure
- 1/4" female inlet, 212° F
- 5100 PSI max. pressure
- 1/4" female inlet, 212° F
- 3625 PSI max. pressure
- 1/4" female inlet, 195°



Cleaner KIND OF CLEAN.

HOSE REELS

Where there's a hose, there's an opportunity for a tangled mess. Nothing like a good hose reel to keep snarls and frustrations at bay. It can also keep the hose from the abuse it takes from concrete floors, not to mention tractors, forklifts and trucks.

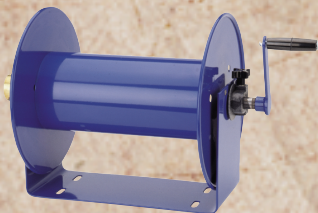
360° Pivot Power Wash Hose Reels

- Perfect for industrial hot or cold water applications
- Reel spins to face the same direction the hose is being pulled
- Bracket mounts easily to walls or portable pressure washer frame, just grab and lift to move the reel to various locations
- Rated up to 5000 PSI and 325° F



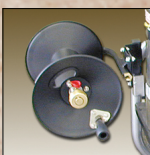
100 Series Hose Reels: "The Challenger"

- Compact, direct hand crank reels
- For air, water and chemical transfer to 4,000 PSI
- Applications include wash down, pressure washing, agricultural, drain cleaning, pesticide, herbicide and general maintenance
- Heavy-duty, solid steel construction
- Durable electrostatic powder coat finish
- Full flow brass swivel inlet
- Direct hand crank rewind in a compact, lightweight reel
- Perfect for mobile applications such as pressure washers and trucks or can be permanently mounted to the floor, wall or ceiling
- Handles product temps to 225° F
- Adjustable drag brake eliminates hose backlash while unreeling
- Manufacturer's 2-year warranty
- Made in USA



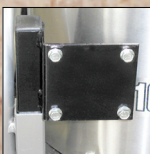
Stationary Reels

- Model: REEL-D30001 | Reel: 3/8" x 50'
- Model: REEL-D30002 | Reel: 3/8" x 100'



Mounting Bracket

- Model: REEL-99MOUNT
- Complete bracket with bolts, nuts
- Jumper hose for mounting reels to units.



SEWAGE AND DRAIN CLEANERS

Want to make your pressure washer even more versatile? Just add sewer nozzles and sewer cleaning hose. The high pressure and self-propulsion action loosens obstructions in sewer and drain lines like a charm. You can even thaw ice in culverts when you use them with a hot high-pressure washer.

Sewer Nozzles

Non-rotating style:

- 4200 PSI max. pressure
- Backward ports drive the nozzle forward to flush debris
- Forward port breaks up clogs and debris (Not available in the 1/8" non-rotating or any of the rotating nozzles)
- Corrosion-free stainless steel construction
- Physically small for excellent cornering



Sewer Nozzles

Rotating style:

- 3000 PSI max. pressure
- Rotating style adds agitation for surface cleaning



Sewer Hose

- Slides easily into drain pipes, sewer and water lines
- Flexible for cornering
- Safe bend radii 0.88" - 1.25"
- Durable construction
- All hose is M x M
- Ends: Solid x Solid / Solid x Swivel
- NOTE: Z09-00200 & Z09-00201 are 1/8" hoses with one 1/8" M end and one 1/4" M end



WET SAND BLASTERS

Raise your hand if you like dust. Perfect. Then you'll love using a wet sand blaster. Sand and grit are carried away with water for a dust-free work zone. And you'll use less sand because water pressure and velocity makes the abrasives, well, more abrasive.

Wet, Industrial-Duty Sand Blast Kit

- Optimal performance range of 4 GPM at 3000 PSI to 8 GPM at 5000 PSI
- 1/4" plug inlet, bolt hex head screw
- Kit includes mixing head, tungsten carbide nozzle, 25' poly braid hose, and probe
- NOTE: Use 0° nozzle, not included

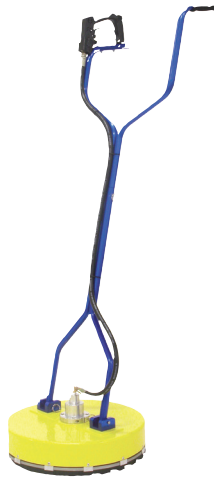


SURFACE CLEANERS

The right pressure washer can blast away dirt, tar, or just about anything. But what about the condition of the surface when you're through? With the spinning action of multiple nozzles on a surface cleaner, you can say goodbye to streaks in no time.

Surface Cleaner

- 8 GPM
- 4000 PSI Max. Pressure
- 160° F
- Weight: Machine - 19 lbs.; Packaged - 25 lbs.



SCALE REDUCER UNITS AND CARTRIDGES

No one likes staining from mineral scale. Here's how to fight it.

SC-50 & SC-100

- Waterflow: 0 to 20 GPM
- Max. pressure head & sump: 125 PSI
- Max. temperature head & sump: 125° F
- Line size: 1/2" to 3/4"



DRAFT DIVERTERS

Features

- Heavy Duty 16 Gauge carbon steel construction
- Painted black
- Separate venting air from combustion



WANDS

Talk about a handy little tool. Control detergents and pressure with a dual lance wand. Reach hard-to-reach places with a push/pull lance or telescoping wand. See where we're going with this? You have a job to do. We help you do it.

Dual Lance

- 10.5 GPM flow rate
- 4100 PSI max. pressure
- 1/4" M x (2) 1/4" F
- 300° F
- Length - 40"
- Vented durable plastic grip
- Includes nozzle protector and 60-degree #40 brass soap tip



Push/Pull Lance

- Perfect for gutters, under fender wells, truck bellies and heavy equipment
- 3050 PSI
- 1/4" F x 1/4" F
- 300° F
- Vented grip can be pulled for lance angle up to 90-degrees
- Pump action allows for quick angle change
- Each angle remains stationary until adjusted

Telescoping Wands

- 8 GPM flow rate
- 4000 PSI max. pressure
- 200° F
- 1/4" hose
- Two aluminum poles and fiberglass outer pole
- Retracted length: 18' = 6 feet 6 inches; 24' = 9 feet

STUFF YOU NEED TO MAKE OUR STUFF EVEN BETTER.

There you have it - a glimpse at some of the extras that make your cleaning system the best in the business. So no matter what you do or what kind of grime or sludge you're trying to overcome, you've got Alkota at your side to fight the fight with accessories that hit your mark. Hey, it's a dirty job. Someone's got to clean it up.

Call your local distributor or email, sales@alkota.com for complete details.

